

Profile Usage Instructions

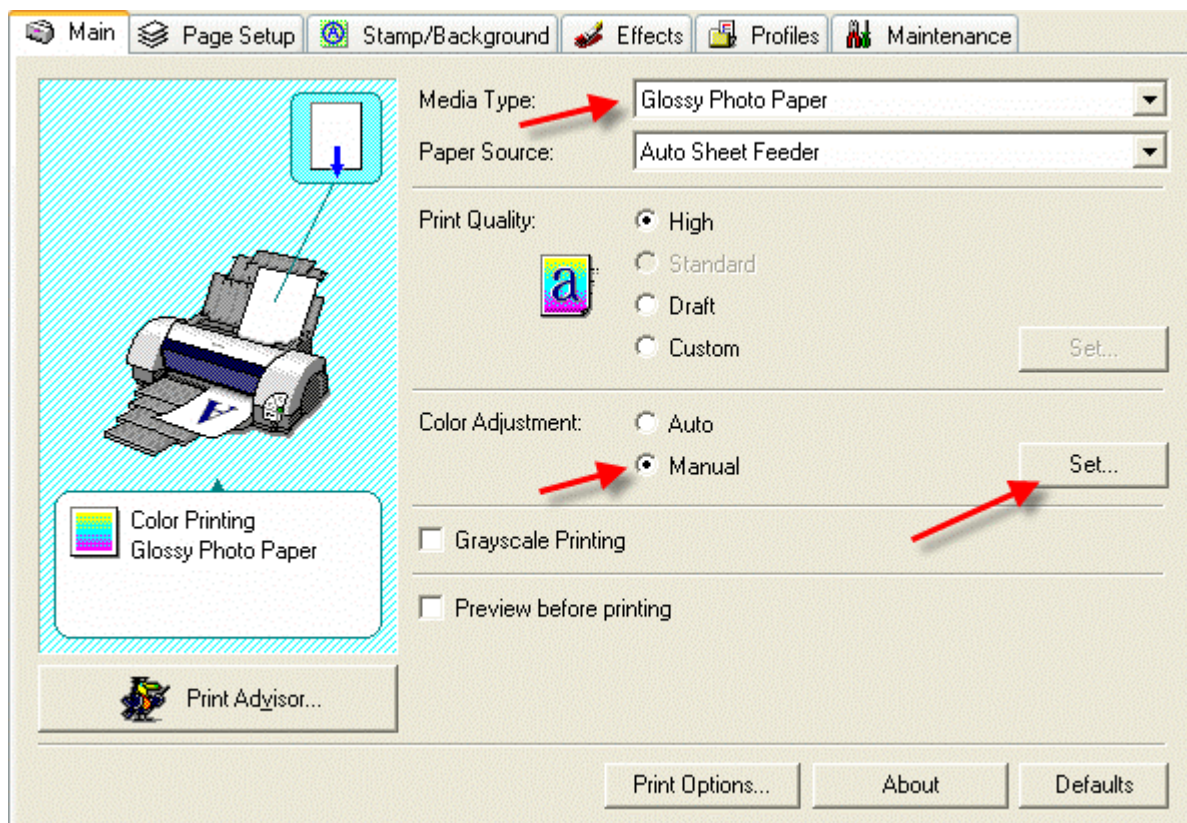
For information on how to use color profiles, read Red River's "Color Profile Usage" and Epson's "How to use ICC profiles". These are available for download at www.redriverpaper.com/profiles

When you install the profile, it will show up in your software profile menu as:

RR Prem Matte 2.0 Can i9900.icc

Below are the required printer driver settings for this profile. You must make sure all of the settings are correct to achieve optimum print quality.

Parameter	Required Setting
Paper Setting	Glossy Photo Paper**
Quality	High
Color Adjustment	Click Manual then Set



**The Glossy Photo Paper provides wider gamut and saturation over other settings

Manual Color Adjustment Menu

Set Print Type to NONE and click OK

